

PLATFORM | SURFACES

# KINETIC WALL

*Glazed Porcelain Tile & Wall Tile*



Platform Surfaces  
330 County Line Rd.  
Bensenville, IL 60106  
630.526.3399 | [platformsurfaces.com](https://platformsurfaces.com)



White Dobraduras Mix



White Highway

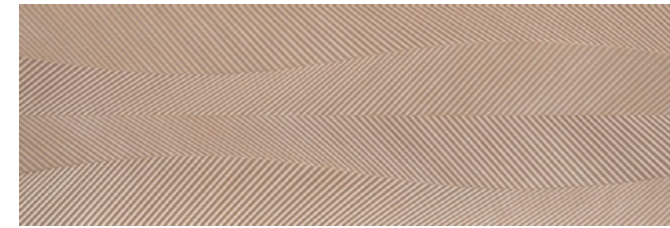


Concreto Dobraduras Mix

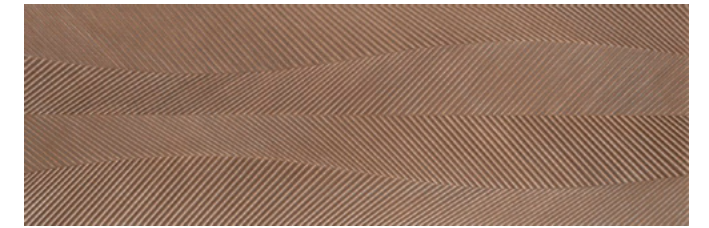


Kalahari White

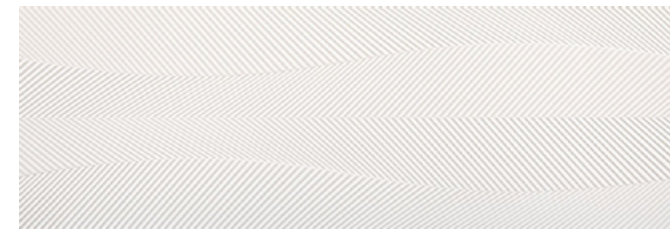
# Kinetic Wall



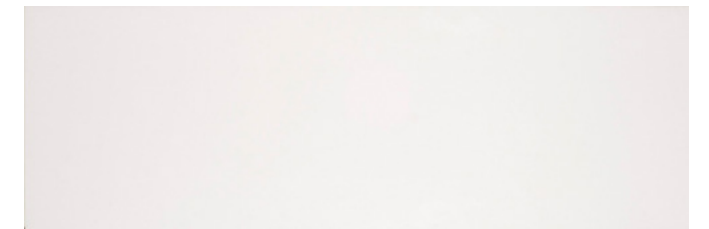
**Betula Clara Origen**  
12"x36" 13.3mm  
Matte Rect.



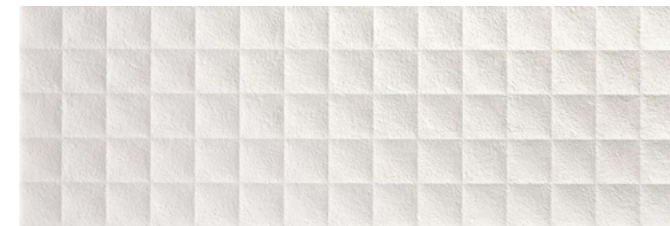
**Betula Escura Origen**  
12"x36" 13.3mm  
Matte Rect.



**Branco Origen**  
12"x36" 13.3mm  
Matte Rect.



**Cetim Bianco**  
12"x36" 13.3mm  
Matte Rect.



**Kalahari White**  
12"x36" 13.3mm  
Matte Rect.



**White Highway**  
12"x36" 13.3mm  
Matte Rect.

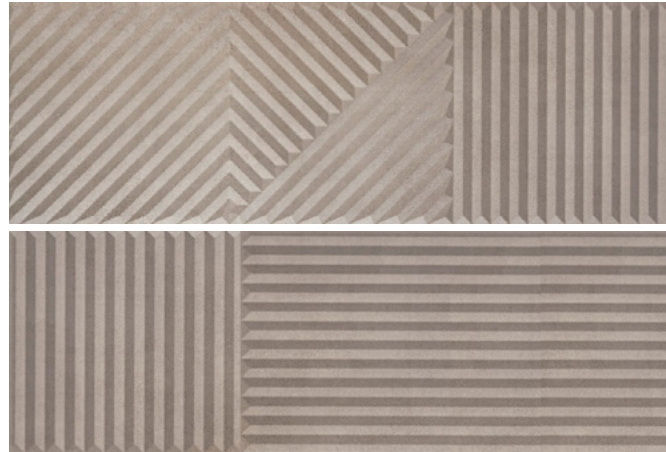


**Ms. Barcelona Acero Saraceno**  
12"x36" 13.3mm  
Matte Rect.



**Ms. Barcelona Cristal Saraceno**  
12"x36" 13.3mm  
Matte Rect.

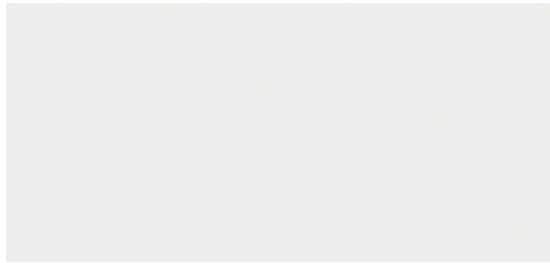
# Kinetic Wall



**Concrete Dobraduras Mix**  
12"x36" 11mm  
Natural Rect.



**White Dobraduras Mix**  
12"x36" 11mm  
Natural Rect.



**Glacier White**  
12"x24" 7mm  
Glossy Rect.



**Ocean White**  
12"x24" 9.5mm  
Glossy Rect.

# Kinetic Wall

## Packaging

Size	Sq. Ft./Box	Pieces/Box	Boxes/PL
12"x24"	22.6 Glacier 16.89 Oceana	12 Glacier 9 Oceana	60
12"x36" Matte	14.42 17.22 Cetim	5 Cetim 6	48
12"x36" Natural	14.42	5	36

## Technical Data

Finish	Freeze Resistant	Shade Variation	Water Absorption	Stain Resistant	DCOF	Chemical Resistant	Breaking Strength
Matte	N/A	V1/V2	≤ 20%	Class A	N/A	Class A	≥125lbf
Glossy	N/A	V1	≤ 20%	Class E	N/A	Class E	≥125lbf
Natural	Resistant	V1/V3	≤ 0.5%	Class A	N/A	Class A	≥275lbf

Matte - Interior walls only.

Natural - Interior and exterior walls.

# PLATFORM|SURFACES

Platform Surfaces - 330 County Line Rd. Bensenville, IL 60106 - 630.526.3399 - [platformsurfaces.com](http://platformsurfaces.com)