

  
**COASTAL**  

---

**RETREAT**  

---

COLLECTION

# inland



**atlas concorde**  
USA



**INLAND**

Inland Gray 7<sup>6</sup>/<sub>8</sub>"x39<sup>3</sup>/<sub>8</sub>" - 20x100 cm  
Inland Gray Bullnose 2.5"x 20" - 6.2x50 cm

# Inland

COLORED BODY PORCELAIN TILE

## THE ESSENCE OF TIME

The heat of the sun penetrating our skin and bones, providing the body with a sweet sensation of comfort and wellness.

**A DEEP AND ANCIENT SENSE OF WARMTH** is retained and released by our Inland Collection, inspired by a mix of different pine wood essences recovered from old American beach houses and piers.

**AGED, NATURAL WOOD PLANKS, RECOVERED AND BRUSHED**, that compose a unique and incomparable natural panel, with a **DRAMATIC VARIATION IN GRAINS, COLORS AND SURFACE STRUCTURES**.

A rustic yet modern style, with a strong visual impact, suitable for any home and commercial space.

- **WORN PINE PLANK LOOK**
- **DRAMATIC KNOTS AND VEINS**
- **RUSTIC YET MODERN STYLE**

## COLORS



White



Gray



Natural

COLORED BODY PORCELAIN TILE



White



Natural



Gray

## INLAND

Inland Gray 7<sup>6</sup>/<sub>8</sub>"x39<sup>3</sup>/<sub>8</sub>" - 20x100 cm



## INLAND

Inland White 7<sup>6</sup>/<sub>8</sub>"x39<sup>3</sup>/<sub>8</sub>" - 20x100 cm





COLORED BODY PORCELAIN TILE

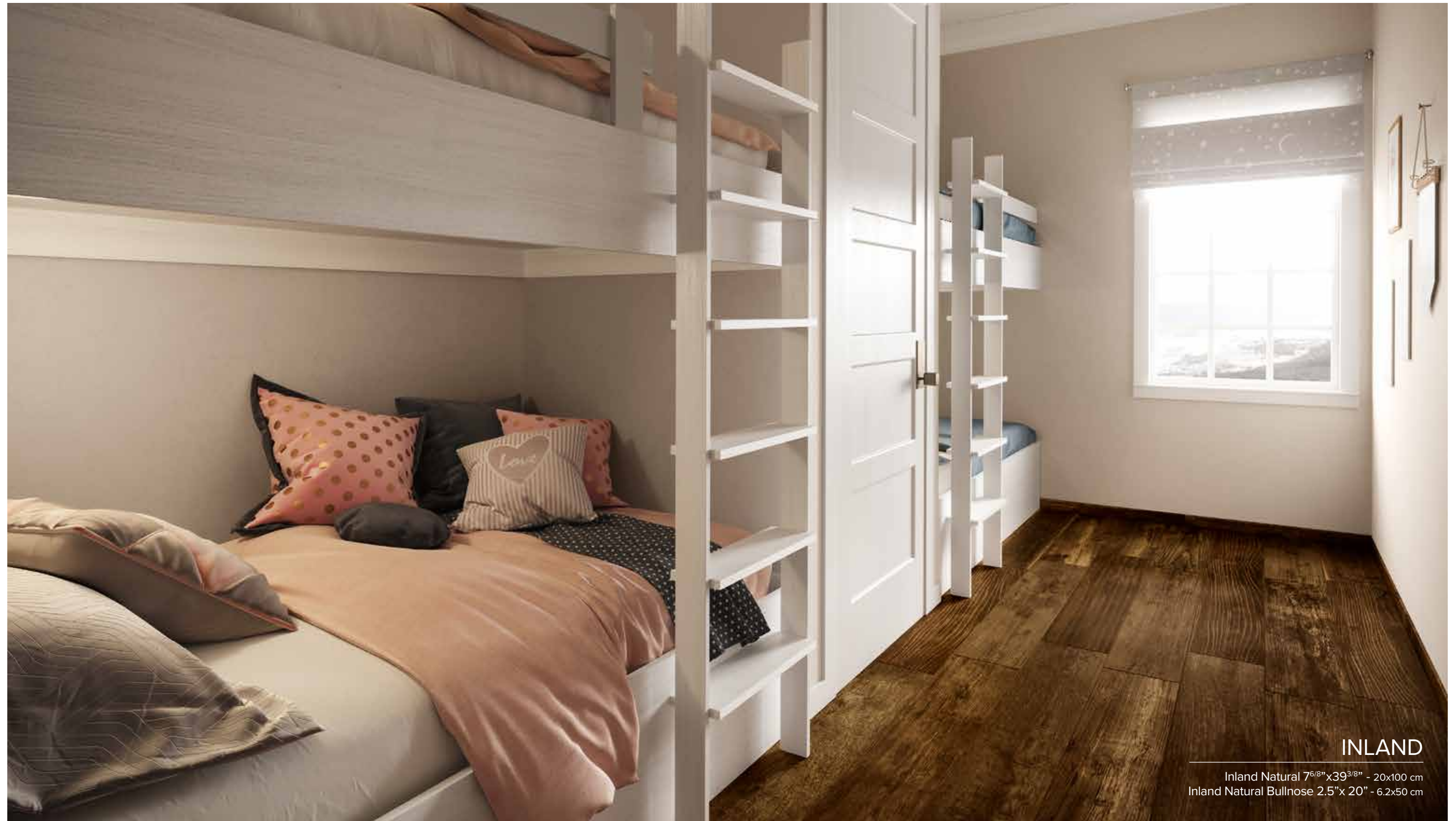


INLAND

Inland White 7<sup>6</sup>/<sub>8</sub>"x39<sup>3</sup>/<sub>8</sub>" - 20x100 cm



COLORED BODY PORCELAIN TILE



INLAND

Inland Natural 7<sup>6</sup>/<sub>8</sub>"x39<sup>3</sup>/<sub>8</sub>" - 20x100 cm  
Inland Natural Bullnose 2.5" x 20" - 6.2x50 cm



SIZE - THICKNESS | 7<sup>6</sup>/<sub>8</sub>" x 39<sup>3</sup>/<sub>8</sub>" - 20x100 cm ✂ 9 mm FINISH | MATTE



**INLAND White**  
7<sup>6</sup>/<sub>8</sub>" x 39<sup>3</sup>/<sub>8</sub>" - 20x100 cm  
610010002262






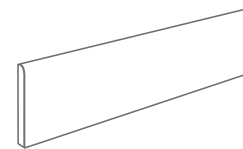
**INLAND Gray**  
7<sup>6</sup>/<sub>8</sub>" x 39<sup>3</sup>/<sub>8</sub>" - 20x100 cm  
610010002263



**INLAND Natural**  
7<sup>6</sup>/<sub>8</sub>" x 39<sup>3</sup>/<sub>8</sub>" - 20x100 cm  
610010002264

## COORDINATING TRIMS

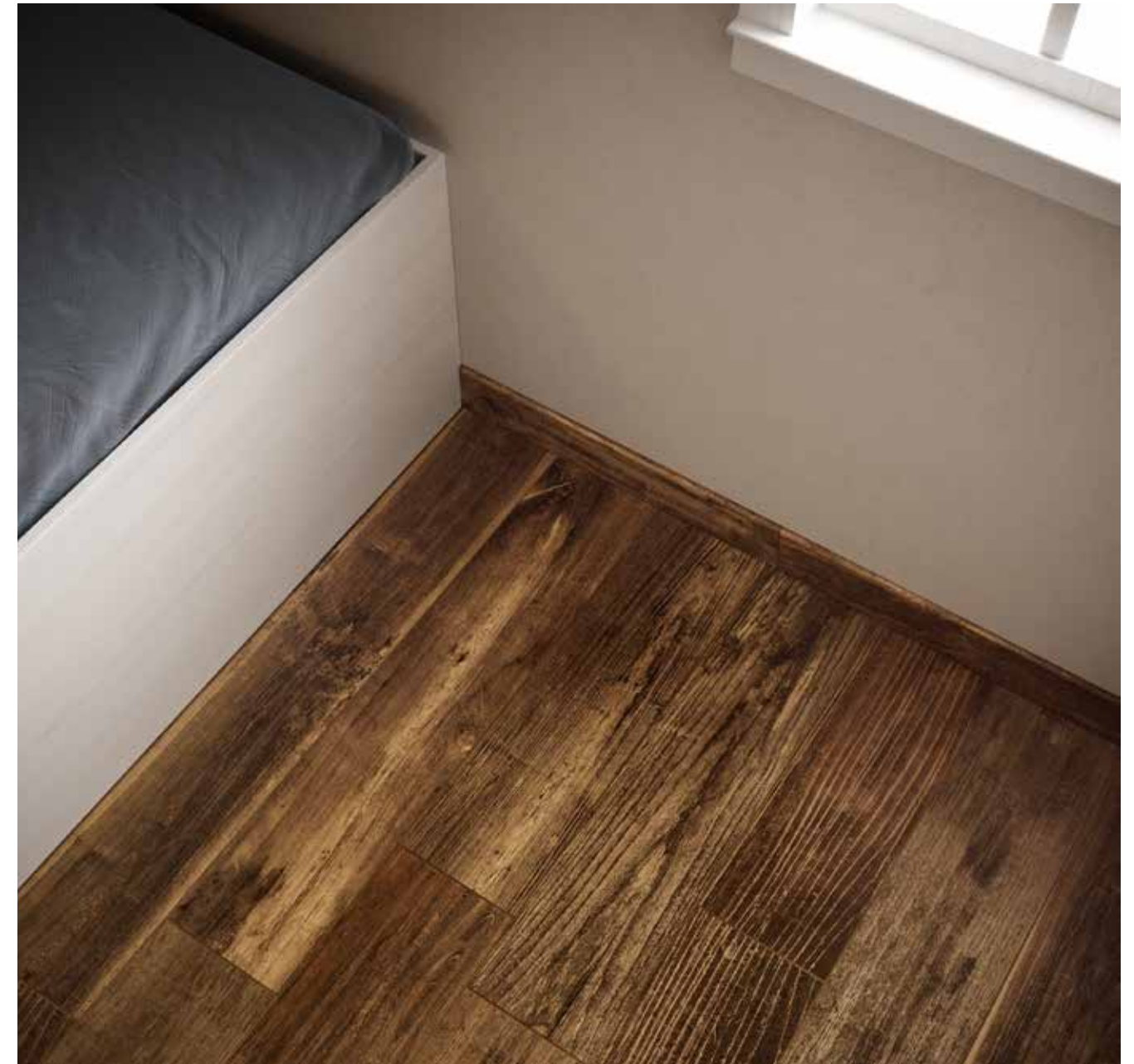
	Bullnose
 INLAND White	610130004020
 INLAND Gray	610130004021
 INLAND Natural	610130004022



**Bullnose**  
2.5" x 20" - 6.2x50 cm

## INLAND

Inland Natural 7<sup>6</sup>/<sub>8</sub>" x 39<sup>3</sup>/<sub>8</sub>" - 20x100 cm  
Inland Natural Bullnose 2.5" x 20" - 6.2x50 cm





COLORED BODY PORCELAIN TILE



Compliant with standards ANSI A137.1-2012

SIZE - THICKNESS

7<sup>5</sup>/<sub>8</sub>" x 39<sup>3</sup>/<sub>8</sub>" - 20x100 cm

9 mm

FINISH

MATTE



MODERATE VARIATION

Random color and/or texture differences from tile to tile, so that one tile may have totally different colors and/or texture from that on other tiles. Thus, the final installation will be unique. It is recommended that the range be viewed before selection.

FIELD TILES - Available in all colors

Commercial size (in)	Nominal size (in)	Thickness (mm)	Finish
8"x40"	7 6/8" x 39 3/8"	9 mm	Matte

MOSAICS AND COORDINATING TRIMS - Available in all colors

Commercial size (in)	Nominal size (in)	Thickness (mm)	Finish
Bullnose 2.5"x20"	2 7/8" x 19 5/8"	9 mm	Matte

Please refer to caliber chart for work sizes. Close joints are not recommended.

PERFORMANCE & FEATURES

PROPERTY	ASTM TEST METHOD	Porcelain Tile Specification				INLAND			
		Calibrated		Rectified					
		Minimum	Maximum	Minimum	Maximum				
REGULARITY CHARACTERISTICS	Nominal Size	ASTM C499	-3.00%	3.00%	-3.00%	2.00%	Compliant		
			Caliber Range (Variation from average facial dimension of sample)	-0.50% or -0.08 in (-2.0 mm) (*)	0.50% or 0.08 in (2.0 mm) (*)	-0.25% or -0.03 in (-0.8 mm) (*)	0.25% or 0.03 in (0.8 mm) (*)	Compliant	
			Thickness (1)	N/A	Range: 0.40 in (1.02 mm)	N/A	Range: 0.40 in (1.02 mm)	Compliant	
	Wedgeing	ASTM C502	-0.50% or -0.08 in (-2.0 mm) (*)	0.50% or 0.08 in (2.0 mm) (*)	-0.25% or -0.03 in (-0.8 mm) (*)	0.25% or 0.03 in (0.8 mm) (*)	Compliant		
			Warpage Edge	ASTM C485	-0.75% or -0.09 in (-2.3 mm) (*)	0.75% or 0.09 in (2.3 mm) (*)	-0.40% or -0.05 in (-1.3 mm) <sup>(2)</sup> or -1.8 mm <sup>(3)</sup> (*)	0.40% or 0.05 in (1.3 mm) <sup>(2)</sup> or 1.8 mm <sup>(3)</sup> (*)	Compliant
					Warpage Diagonal	-0.50% or -0.08 in (-2.0 mm) (*)	0.50% or 0.08 in (2.0 mm) (*)	-0.40% or -0.07 in (-1.8 mm) (*)	0.40% or 0.07 in (1.8 mm) (*)
All Porcelain Tiles									
STRUCTURAL CHARACTERISTICS	Water Absorption	ASTM C373	≤ 0.5%			≤ 0.5%			
BULK MECHANICAL CHARACTERISTICS	Breaking Strength	ASTM C648	Average ≥ 250 lbf. (1.11 kN) Individual ≥ 225 lbf. (1.00 kN)			≥ 350 lbf. avg			
PHYSICAL PROPERTIES	Bond Strength	ASTM C482	≥ 50 psi (0.34 Mpa)			≥ 100 psi			
THERMAL AND IGROMETRIC CHARACTERISTICS	Resistance to Freeze/Thaw Cycling	ASTM C1026	As Reported			Resistant			
CHEMICAL CHARACTERISTICS	Chemical Resistance	ASTM C650	As Reported			Unaffected			
	Stain Resistance	ASTM C1378	As Reported			Unaffected			
SAFETY CHARACTERISTICS	Dynamic coefficient of friction	DCOF	Requires a minimum value of 0.42 for commercial areas that are likely to be wet			> 0.42 Wet			

(\*) Whichever is less  
 (1) May not apply to textured surfaces or tiles with uneven back patterns.  
 (2) Whichever is less, for tiles up to 24"x24" (610 mm x 610 mm).  
 (3) Applies to tiles larger than 24"x24" (610 mm x 610 mm).

The Health Product Declaration® logo is a registered trademark of HPD Collaborative.



Atlas Concorde reserves the right to modify any product without notice and will not be liable for any direct or indirect damage resulting from such modifications. Colors and optical features of the materials illustrated in this catalogue are to be regarded as mere indications. For information and details relating to codes, packaging and weight it is recommended to refer to the latest pricelist.

© Copyright Atlas Concorde USA, Inc. 2019  
 The reproduction of the work, fully or in part, is strictly forbidden.