

PIETRA

by Ceramica Magica®

MADE IN
ITALY

Creating design.



mix LIMESTONE | INCISA grey
wall spaccatella 30x30



PIETRA

A collection with multiple souls.

A project of colour and texture, in the name of a natural stone look. From Limestone, a mix of soft-look stones that are universal and suitable for any use and design to Travertino, a veined and directional classic stone with a strong personality – following on to Incisa, a natural and transversal interpretation in R11 of the Limestone look: 3 finishes and looks in 4 colours, in a mix of warm and cold tones. From commercial to Design-Led projects,

Pietra is set to become an everlasting series for Ceramica Magica.

Eclectic design for both interiors and exteriors: Pietra.

Una serie dalle molteplici anime.

Un progetto di colore e di materia, all'insegna dell'effetto pietra naturale.

Dal Limestone, un mix di pietre dal look soft che lo rendono universale e adatto a qualsiasi utilizzo e design, al Travertino, un classico venato, direzionale e dalla forte personalità, fino all'Incisa, un'interpretazione naturale e trasversale in R11 della finitura Limestone: 3 finiture e look in 4 colori, in un mix di toni caldi e freddi. Dal progetto commerciale al design d'interni, la collezione Pietra è

destinata a diventare una serie eterna per Ceramica Magica.

Design eclettico, per interni ed esterni: Pietra.



LIMESTONE ivory
60x120 matt

PIETRA LIMESTONE



LIMESTONE taupe
wall herringbone 30x30



LIMESTONE taupe
floor 60x60 -15x15 matt

LIMESTONE grey
wall 60x120 matt

mix LIMESTONE | INCISA black
wall 10x15 mix



LIMESTONE grey
floor 60x120 matt



LIMESTONE grey
60x120 matt



LIMESTONE black
60x120 matt



graphic development 60x120

FORMATI DISPONIBILI | **AVAILABLE SIZES**
rettificati e modulari | rectified and modular



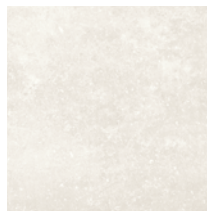
LIMESTONE 60x120 24"x48"
matt



LIMESTONE 60x60 24"x24"
matt



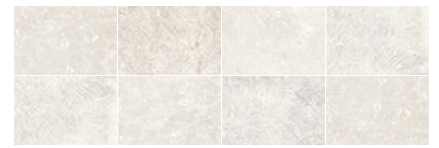
LIMESTONE 30x60 12"x24"
matt



LIMESTONE
30x30 12"x12"
matt



LIMESTONE
15x15 matt



mix LIMESTONE | INCISA
10x15 mix



LIMESTONE mosaic
30x30 12"x12"
(5x5 2"x2") matt



LIMESTONE
herringbone
30x30 12"x12"
matt



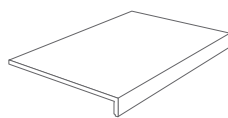
mix
LIMESTONE | INCISA
spaccatella 30x30 12"x12"



LIMESTONE brick wall
30x60 12"x24" matt



skirting
7x60 - 3"x24"
matt



step 33x120x4
13"x48"x2"
matt

|PIETRA LIMESTONE taupe



graphic development 60x120


V2 MODERATE

FORMATI DISPONIBILI | **AVAILABLE SIZES**
rettificati e modulari | rectified and modular



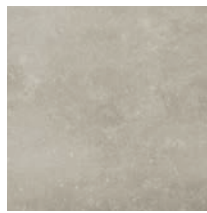
LIMESTONE 60x120 24"x48"
matt



LIMESTONE 60x60 24"x24"
matt



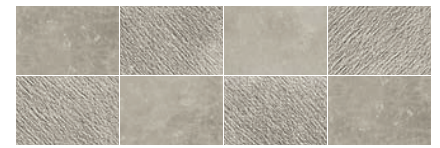
LIMESTONE 30x60 12"x24"
matt



LIMESTONE
30x30 12"x12"
matt



LIMESTONE
15x15 matt



mix LIMESTONE | INCISA
10x15 mix



LIMESTONE mosaic
30x30 12"x12"
(5x5 2"x2") matt



LIMESTONE
herringbone
30x30 12"x12"
matt



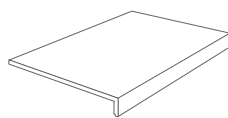
mix
LIMESTONE | INCISA
spaccatella 30x30 12"x12"



LIMESTONE brick wall
30x60 12"x24" matt



skirting
7x60 - 3"x24"
matt



step 33x120x4
13"x48"x2"
matt

|PIETRA LIMESTONE grey



graphic development 60x120





LIMESTONE 60x120 24"x48"
matt



LIMESTONE 60x60 24"x24"
matt



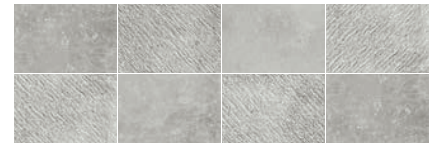
LIMESTONE 30x60 12"x24"
matt



LIMESTONE
30x30 12"x12"
matt



LIMESTONE
15x15 matt



mix LIMESTONE | INCISA
10x15 mix



LIMESTONE mosaic
30x30 12"x12"
(5x5 2"x2") matt



LIMESTONE
herringbone
30x30 12"x12"
matt



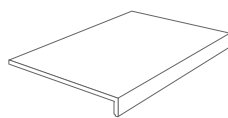
mix
LIMESTONE | INCISA
spaccatella 30x30 12"x12"



LIMESTONE brick wall
30x60 12"x24" matt



skirting
7x60 - 3"x24"
matt



step 33x120x4
13"x48"x2"
matt

|PIETRA LIMESTONE black



graphic development 60x120

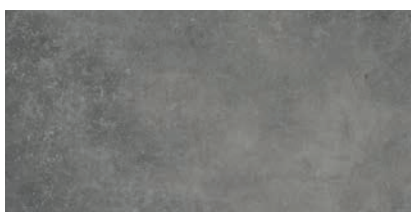




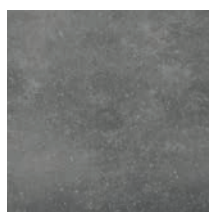
LIMESTONE 60x120 24"x48"
matt



LIMESTONE 60x60 24"x24"
matt



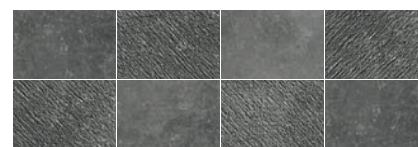
LIMESTONE 30x60 12"x24"
matt



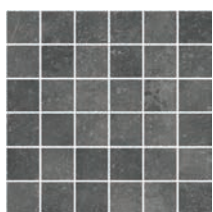
LIMESTONE
30x30 12"x12"
matt



LIMESTONE
15x15 matt



mix LIMESTONE | INCISA
10x15 mix



LIMESTONE mosaic
30x30 12"x12"
(5x5 2"x2") matt



LIMESTONE
herringbone
30x30 12"x12"
matt



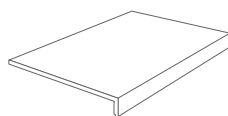
mix
LIMESTONE | INCISA
spaccatella 30x30 12"x12"



LIMESTONE brick wall
30x60 12"x24" matt



skirting
7x60 - 3"x24"
matt



step 33x120x4
13"x48"x2"
matt

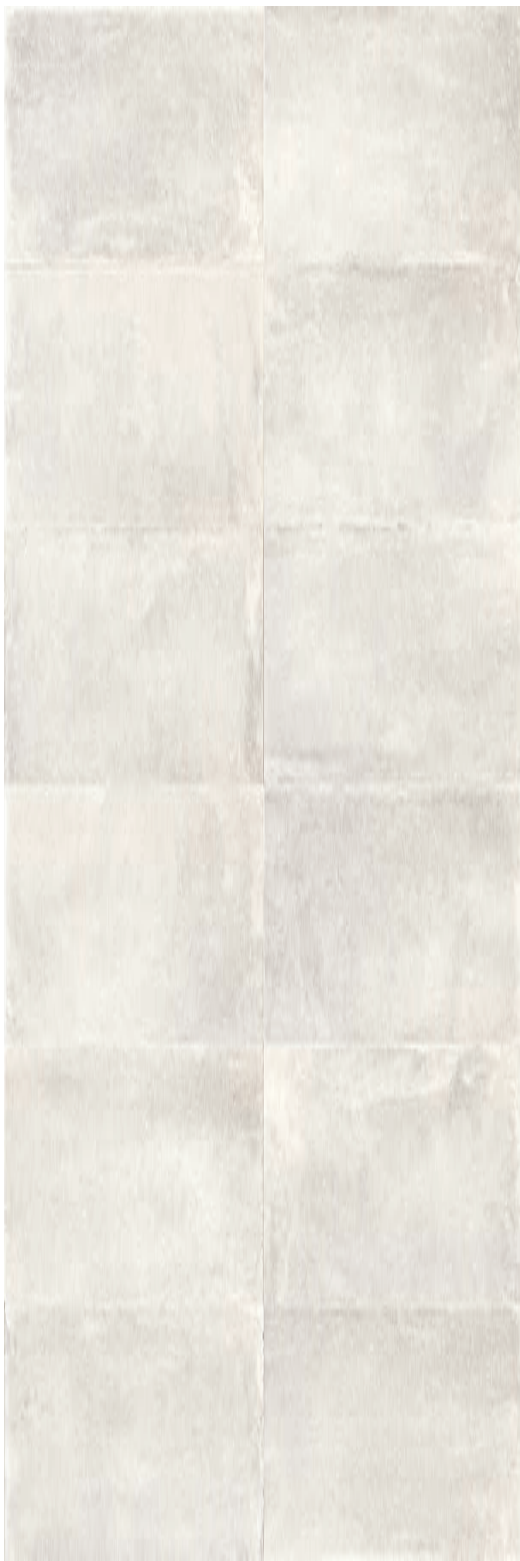
LIMESTONE | INCISA grey
wall 10x15 mix

INCISA grey
floor 60x60 matt

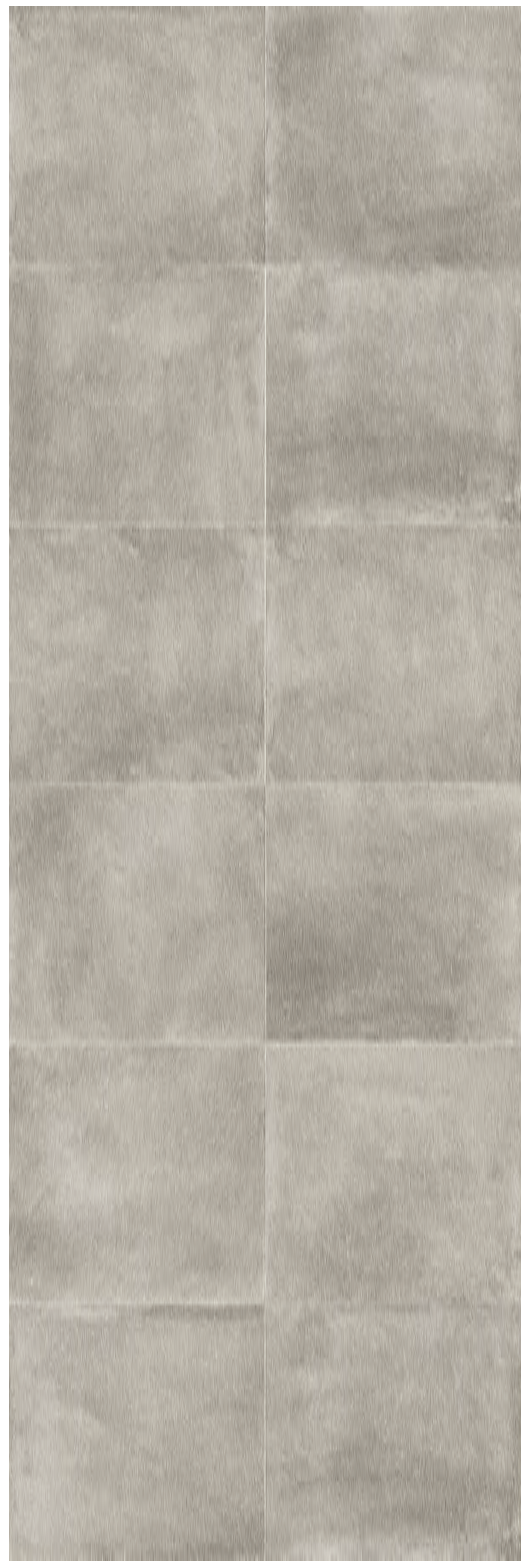


PIETRA INCISA





ivory



taupe

graphic development 60x60

FORMATI DISPONIBILI | **AVAILABLE SIZES**
rettificati e modulari | rectified and modular



INCISA white
60x60 24"x24" antislip



INCISA white
30x60 12"x24" antislip



INCISA white
30x30 12"x12"
(5x5 2"x2") antislip



INCISA white brick wall
30x60 12"x24" antislip



INCISA taupe
60x60 24"x24" antislip



INCISA taupe
30x60 12"x24" antislip



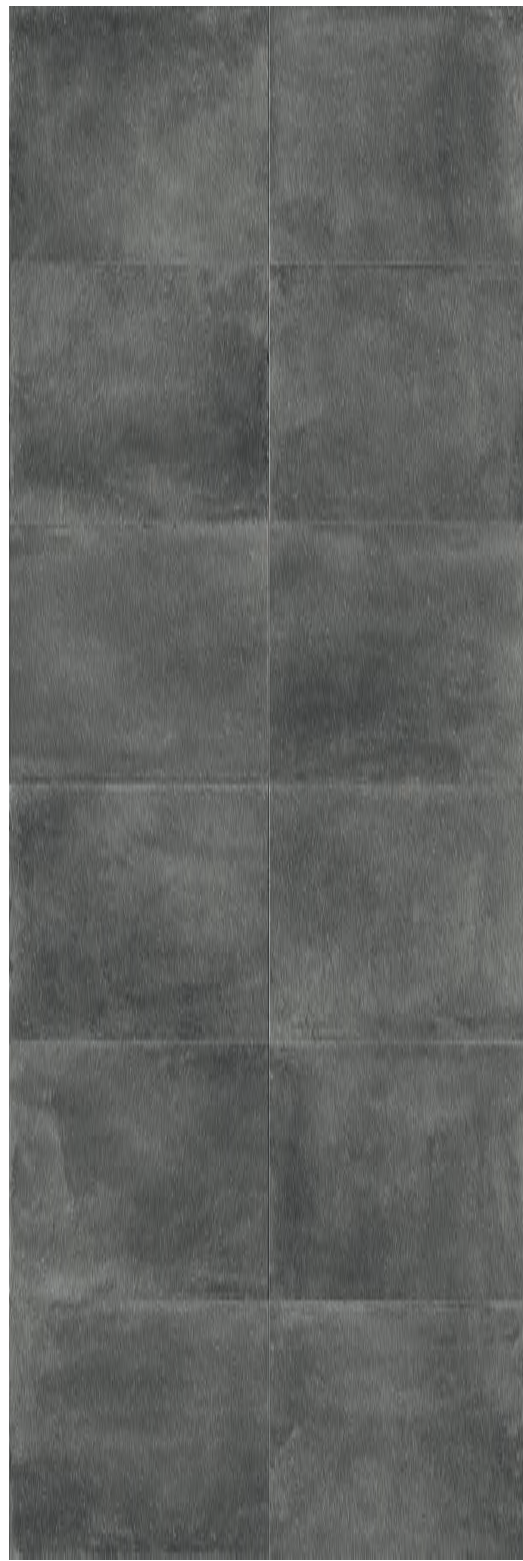
INCISA taupe
30x30 12"x12"
(5x5 2"x2") antislip



INCISA taupe brick wall
30x60 12"x24" antislip



grey



black

graphic development 60x60

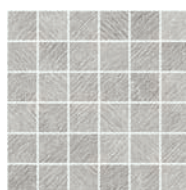
FORMATI DISPONIBILI | **AVAILABLE SIZES**
rettificati e modulari | rectified and modular



INCISA grey
60x60 24"x24" antislip



INCISA grey
30x60 12"x24" antislip



INCISA grey
30x30 12"x12" (5x5 2"x2") antislip



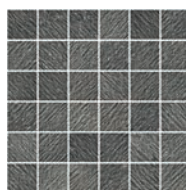
INCISA grey brick wall
30x60 12"x24" antislip



INCISA black
60x60 24"x24" antislip



INCISA black
30x60 12"x24" antislip



INCISA black
30x30 12"x12" (5x5 2"x2") antislip



INCISA black brick wall
30x60 12"x24" antislip

TRAVERTINO ivory
wall 30x60 matt

TRAVERTINO ivory
floor 60x120 matt



PIETRA TRAVERTINO



TRAVERTINO taupe
60x120 matt



TRAVERTINO grey
60x120 matt



TRAVERTINO black
60x120 matt



graphic development 60x120

FORMATI DISPONIBILI | **AVAILABLE SIZES**
rettificati e modulari | rectified and modular



TRAVERTINO 60x120 24"x48"
matt



TRAVERTINO 60x60 24"x24"
matt



TRAVERTINO 30x60 12"x24"
matt



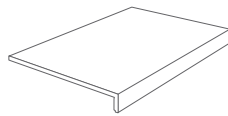
TRAVERTINO
30x30 12"x12"
(5x5 2"x2")
matt



TRAVERTINO brick wall
30x60 12"x24" matt



skirting
7x60 - 3"x24"
matt



step 33x120x4
13"x48"x2"
matt

|PIETRA TRAVERTINO taupe



graphic development 60x120



TRAVERTINO 60x120 24"x48"
matt



TRAVERTINO 60x60 24"x24"
matt



TRAVERTINO 30x60 12"x24"
matt



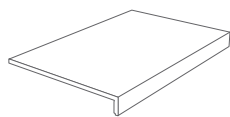
TRAVERTINO 30x30 12"x12"
(5x5 2"x2")
matt



TRAVERTINO brick wall
30x60 12"x24" matt



skirting
7x60 - 3"x24"
matt



step 33x120x4
13"x48"x2"
matt

|PIETRA TRAVERTINO grey



graphic development 60x120

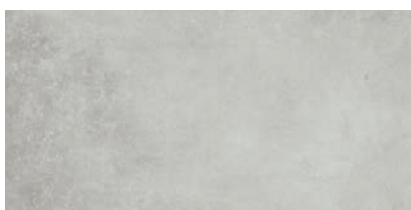

V2 MODERATE



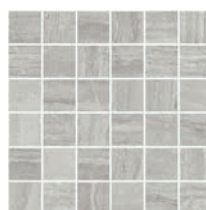
TRAVERTINO 60x120 24"x48"
matt



TRAVERTINO 60x60 24"x24"
matt



TRAVERTINO 30x60 12"x24"
matt



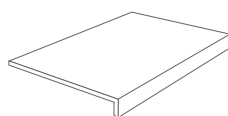
TRAVERTINO 30x30 12"x12"
(5x5 2"x2")
matt



TRAVERTINO brick wall
30x60 12"x24" matt



skirting
7x60 - 3"x24"
matt



step 33x120x4
13"x48"x2"
matt

|PIETRA TRAVERTINO black

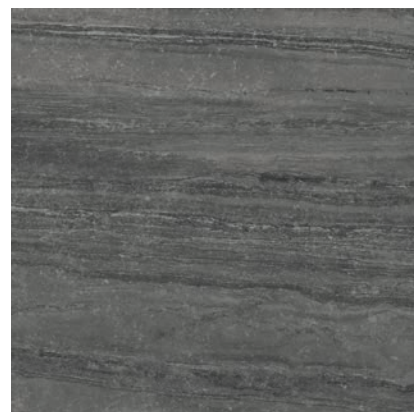


graphic development 60x120


V2 MODERATE



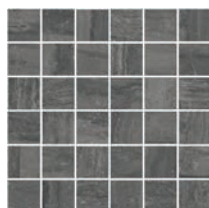
TRAVERTINO 60x120 24"x48"
matt



TRAVERTINO 60x60 24"x24"
matt



TRAVERTINO 30x60 12"x24"
matt



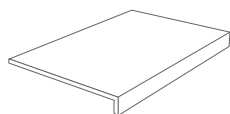
TRAVERTINO
30x30 12"x12"
(5x5 2"x2")
matt



TRAVERTINO brick wall
30x60 12"x24" matt



skirting
7x60 - 3"x24"
matt



step 33x120x4
13"x48"x2"
matt

#packaging PIETRA

9,5mm

V2 MODERATE

SIZES	BOX 			PALLET 		
	PCS	SQ. MT.	KG	BOXES	SQ. MT.	KG
 LIMESTONE/TRAVERTINO 60x120 cm 24"x48" MATT RECTIFIED	2	1,44	34,55	36	51,84	1244
 LIMESTONE/TRAVERTINO 60x60 cm 24"x24" MATT RECTIFIED	3	1,08	22,80	40	43,20	912
 INCISA 60x60 cm 24"x24" ANTISLIP RECTIFIED	3	1,08	22,80	40	43,20	912
 LIMESTONE/TRAVERTINO 30x60 cm 12"x24" MATT RECTIFIED	6	1,08	22,20	48	51,85	1065
 INCISA 30x60 cm 12"x24" ANTISLIP RECTIFIED	6	1,08	22,20	48	51,85	1065
 LIMESTONE 30x30 cm 12"x12" MATT RECTIFIED	11	1,00	20,50	48	48,00	1000
 LIMESTONE 15x15 cm 6"x6" MATT RECTIFIED	44	1,00	20,50	48	48,00	1000
 mix LIMESTONE/INCISA 10x15 cm 4"x6" MATT/ANTISLIP RECTIFIED	66	1,00	20,50	48	48,00	1000
 LIMESTONE/INCISA/TRAVERTINO mosaic 30x30 cm 12"x12" (5x5 - 2"x2") MATT/ANTISLIP	11	1,00	20,00	30	30,00	630
 LIMESTONE herringbone 30x30 cm 12"x12" MATT	10	0,80	16,40	36	28,80	610
 mix LIMESTONE/INCISA spaccatella 30x30 cm 12"x12" (6,5x3-2x1 - 3"x3"-1"x1")	10	0,80	18,04	36	21,66	665
 LIMESTONE/INCISA/TRAVERTINO brick wall 30x60 cm 12"x24" MATT	4	0,72	16,05	30	21,68	495
 LIMESTONE/TRAVERTINO skirting 7x60 cm 3"x24" MATT RECTIFIED	14	8,4ml	14,00	-	-	-
 LIMESTONE/TRAVERTINO step 33x120x4 cm 13"x48"x2" STEP TREAD WITH FULL SKIRTING MATT RECTIFIED	2	-	18,20	-	-	-




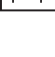










TECHNICAL FEATURES UNGLAZED PORCELAIN TILES

CONFORMING TO EUROPEAN STANDARDS EN 14411 ISO 13006 APP. G (GRUPPO BIA UGL CON EB ≤ 0,5%)

CARATTERISTICHE TECNICHE GRÈS PORCELLANATO NON SMALTATO Conformi a Norme Europee EN 14411 ISO 13006 App. G (Gruppo Bia UGL con Eb ≤ 0,5%)

TECHNISCHE EIGENSCHAFTEN UNGLASIERTES FEINSTEINZEUG Gemäß den Europäischen Normen EN 14411 ISO 13006 App. G (Gruppo Bia UGL con Eb ≤ 0,5%)

CARACTERISTIQUES TECHNIQUES GRÈS CÉRAME FIN NON ÉMAILLÉ Conformes aux Normes Européennes EN 14411 ISO 13006 App. G (Gruppo Bia UGL con Eb ≤ 0,5%)

TECHNICAL FEATURES CARATTERISTICHE TECNICHE TECHNISCHE DATEN CARACTERISTIQUES TECHNIQUES	TESTING METHOD METODICA DI PROVA PRÜFVERFAHREN NORME D'ESSAIS	REFERENCE STANDARD RIFERIMENTO NORMA STANDARDWERT REFERENCE NORME	TEST RESULTS VALORE PRODOTTO PRODUKT WERTE VALEUR PRODUIT																		
 <p>Sizes Dimensioni Abmessungen Dimensions</p>	EN ISO 10545-2	<p>N₂ 15cm</p> <table border="1"> <tr> <td>• Length and width - Lunghezza e larghezza - Länge und Breite - Longueur et largeur</td> <td>(%)</td> <td>(mm)</td> </tr> <tr> <td>• Thickness Spessore - Stärke - Epaisseur</td> <td>±0,6%</td> <td>±2,0 mm</td> </tr> <tr> <td>• Linearity - Rettilineità spigoli - Kantengeradheit - Rectitude des arêtes</td> <td>±0,5</td> <td>±1,5</td> </tr> <tr> <td>• Wedgind - Ortogonalità - orthogonalité - Rechtwinkligkeit - Orthogonalité</td> <td>±0,5</td> <td>±2,0</td> </tr> <tr> <td>• Warpage - Planarità - Ebenförmigkeit - planarité</td> <td>±0,5</td> <td>±2,0</td> </tr> <tr> <td>• Appearance: percentage of acceptable tiles, per lot Aspetto: percentuale di piastrelle accettabili nel lotto Oberflächenbeschaffenheit: Prozentsatz der Fliesen, die den geforderten Eigenschaften entsprechen Aspect: pourcentage de carreaux acceptables sur la fourniture totale</td> <td>95% min.</td> <td>-</td> </tr> </table>	• Length and width - Lunghezza e larghezza - Länge und Breite - Longueur et largeur	(%)	(mm)	• Thickness Spessore - Stärke - Epaisseur	±0,6%	±2,0 mm	• Linearity - Rettilineità spigoli - Kantengeradheit - Rectitude des arêtes	±0,5	±1,5	• Wedgind - Ortogonalità - orthogonalité - Rechtwinkligkeit - Orthogonalité	±0,5	±2,0	• Warpage - Planarità - Ebenförmigkeit - planarité	±0,5	±2,0	• Appearance: percentage of acceptable tiles, per lot Aspetto: percentuale di piastrelle accettabili nel lotto Oberflächenbeschaffenheit: Prozentsatz der Fliesen, die den geforderten Eigenschaften entsprechen Aspect: pourcentage de carreaux acceptables sur la fourniture totale	95% min.	-	<p>Compliant Conforme Erfüllt Conforme</p>
• Length and width - Lunghezza e larghezza - Länge und Breite - Longueur et largeur	(%)	(mm)																			
• Thickness Spessore - Stärke - Epaisseur	±0,6%	±2,0 mm																			
• Linearity - Rettilineità spigoli - Kantengeradheit - Rectitude des arêtes	±0,5	±1,5																			
• Wedgind - Ortogonalità - orthogonalité - Rechtwinkligkeit - Orthogonalité	±0,5	±2,0																			
• Warpage - Planarità - Ebenförmigkeit - planarité	±0,5	±2,0																			
• Appearance: percentage of acceptable tiles, per lot Aspetto: percentuale di piastrelle accettabili nel lotto Oberflächenbeschaffenheit: Prozentsatz der Fliesen, die den geforderten Eigenschaften entsprechen Aspect: pourcentage de carreaux acceptables sur la fourniture totale	95% min.	-																			
 <p>Water absorption Assorbimento d'acqua Wasseraufnahme Absorption d'eau</p>	EN ISO 10545-3	Ep ≤ 0,5%	<p>Compliant Conforme Erfüllt Conforme</p>																		
 <p>Modulus of rupture Resistenza alla flessione Biegezugfestigkeit Résistance à la flexion</p>	EN ISO 10545-4	Medium value 35 N/mm ² min.	<p>Compliant Conforme Erfüllt Conforme</p>																		
 <p>Breaking strenght Carico di rottura Bruchlast Charge de rupture</p>		sp. > = 7,5 mm: min 1300 N	<p>Compliant Conforme Erfüllt Conforme</p>																		
 <p>Abrasion resistance Resistenza all'abrasione Abriebbeständigkeit Résistance à l'abrasion</p>	EN ISO 10545-6	175 mm ³ max	<p>Average Medio - Mittelwert - Moyenne < 150 mm³</p>																		
 <p>Thermal expansion coefficient Coefficiente di dilatazione termica lineare Wärmeausdehnung Coefficient de dilatation thermique linéaire</p>	EN ISO 10545-8	*Declared value Valore dichiarato Angegebener Wert Valeur déclaré	≤9 MK-1																		
 <p>Thermal shock resistance Resistenza agli sbalzi termici Temperaturwechselbeständigkeit Résistance aux écarts de température</p>	EN ISO 10545-9	*Pass according to ISO 10545-1 Test superato in accordo con ISO 10545-1 Test ueberstanden nach ISO 10545-1 Pv en accord avec norme en 10545-1	<p>Resistant Resistente Widerstandsfähig Résistant</p>																		
 <p>Frost resistance Resistenza al gelo Frostbeständigkeit Résistance au gel</p>	EN ISO 10545-12	*Pass according to ISO 10545-1 Test superato in accordo con ISO 10545-1 Test ueberstanden nach ISO 10545-1 Pv en accord avec norme en 10545-1	<p>Resistant Resistente Widerstandsfähig Résistant</p>																		
 <p>Resistance to low concentrations of acids and alkali Resistenza a basse concentrazioni di acidi e alcali Beständigkeit gegen schwach konzentrierte Säuren und Laugen Résistance à des basses concentrations d'acides et bases</p>	EN ISO 10545-13	*Declared value Valore dichiarato Angegebener Wert Valeur déclaré	<p>From ULA to ULB Da ULA a ULB Von ULA bis ULB De ULA jusqu'à ULB</p>																		
 <p>Resistance to high concentrations of acids and alkali Resistenza ad alte concentrazioni di acidi e alcali Beständigkeit gegen stark konzentrierte Säuren und Laugen Résistance à des hautes concentrations d'acides et bases</p>	EN ISO 10545-13	*Declared value Valore dichiarato Angegebener Wert Valeur déclaré	<p>From UHA to UHB Da UHA a UHB Von UHA bis UHB De UHA jusqu'à UHB</p>																		
 <p>Resistance to domestic chemicals and additives for swimming pools Resistenza ai prodotti chimici di uso domestico e agli additivi per piscina Beständigkeit gegen chemische Haushaltsreiniger und Zusatzstoffe für Schwimmbäder Résistance aux prod. chimiques d'usage domestique et additifs pour piscines</p>		UB min.	UA																		
 <p>Stain resistance of unglazed porcelain Resistenza alle macchie di piastrelle non smaltate Fleckenbeständigkeit von unglasierten Fliesen Résistance aux tâches des carreaux non émaillés</p>	EN ISO 10545-14	*Declared value Valore dichiarato Angegebener Wert Valeur déclaré	CLASSE 5																		
 <p>Colors resistance to light Resistenza dei colori alla luce Lichtbeständigkeit Résistance des couleurs à la lumière</p>	DIN 51094	No noticeable color change. Non devono presentare apprezzabili variazioni di colore. Die Muster dürfen keine sichtbaren Farbveränderungen aufweisen. Ne doivent pas présenter de variations importantes des couleurs.	<p>No alteration after testing Materiale inalterato dopo il test Keine Veränderung nach dem Test Aucune altération relevée</p>																		
 <p>Friction coefficient (Slipperiness) Coefficiente di attrito (Scivolosità) Reibungskoeffizient (Schlupfrigkeit) Coefficient de friction (Glissement)</p>	DIN 51130	*Declared value Valore dichiarato Angegebener Wert Valeur déclaré	R10* PIETRA matt																		
	ANSI A137.1 (DCOF)		>0,42 matt																		

* It's advisable to refer Contract Division for all necessary guidelines to a correct use
Si raccomanda di consultare Contract Division per le indicazioni necessarie al corretto utilizzo
Zur korrekten Anwendung wird empfohlen unsere Contract Division zu kontaktieren
Merci de consulter notre Contract Division pour les indications à un usage correct

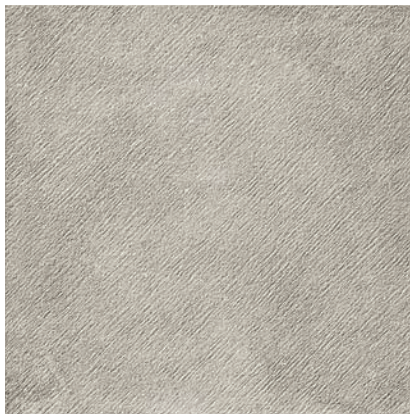
LIMESTONE



INCISA



TRAVERTINO



03|PIETRA

Une série avec plusieurs âmes.

Un projet de couleur et de matière caractérisé par un effet pierre naturelle.

Limestone : un mix de pierres au look soft universel qui convient à tout usage et design.

Travertino : un classique veiné, directionnel et avec une forte personnalité.

Incisa : une interprétation naturelle et transversale de la finition Limestone, en R11: 3 surfaces en 4 couleurs, un mix de tonalités chaudes et froides.

Du projet commercial au design d'intérieurs, Pietra va devenir pour Ceramica Magica une gamme éternelle.

Un design éclectique pour intérieurs et extérieurs, voilà Pietra.

Eine Serie mit mehreren Herzen.

Ein Projekt über Farbe und Struktur, Naturstein-Effekt.

Von Limestone, ein Mix von weich-asussehenden Steinen, die das Produkt universell und für jedes Gebrauch und Design geeignet machen, bis zu Travertino, klassisch ausgerichtet marmoriert, mit starken Charakter, bis zu Incisa, eine natürliche und durchgehende Interpretation in R11 des Limestone-Look: 3 Oberflächen und Look in 4 Farben, in einem Mix von wärmen und kalten Töne. Von Projektbereich bis zu Interior Design, die Kollektion Pietra wird eine ständige Serie für Ceramica Magica sein.

Eklektisches Design, für Innen- und Aussenbereich: Pietra.

Una colección con muchas almas. Un proyecto de color y textura, en la identidad de un aspecto de piedra natural. Desde Limestone, una combinación de piedras de aspecto suave que lo hacen universal y adecuado para cualquier uso y design, hasta Travertino, un clásico veteadado y direccional con una fuerte personalidad, hasta Incisa, una interpretación natural y transversal en R11 del estilo Limestone: 3 acabados y estilòs en 4 colores, en una combinación de tonos cálidos y fríos. Desde proyectos comerciales hasta design de interiores, la colección Pietra es destinada a convertirse en una serie eterna por Ceramica Magica. Design ecléctico, tanto para los espacios interiores como para aquellos exteriores: Pietra.

“STAY HUNGRY, STAY FOOLISH.”

S.JOBS 1955-2011



EN 14411: 2012

Declaration of performance available on our website www.cermagica.it

Dichiarazione di prestazione consultabile sul sito www.cermagica.it

Declaration de prestation consultable sur site www.cermagica.it

Leistungserklärung befragbar auf Website www.cermagica.it

Declaración de prestaciones consultable en nuestro sitio web www.cermagica.it

.....
FOR TECHNICAL PRINTING REASONS, THE COLOURS SHOWN MAY SLIGHTLY DIFFER FROM THE ACTUAL TILES. CERAMICA MAGICA RESERVES THE RIGHT TO MODIFY THE TECHNICAL INFORMATION QUOTED IN THIS CATALOGUE.

PER RAGIONI TECNICHE DI STAMPA I TONI RIPRODOTTI POSSONO PRESENTARE DELLE ALTERAZIONI DI COLORE RISPETTO AI CAMPIONI ORIGINALI. CERAMICA MAGICA SI RISERVA LA FACOLTÀ DI MODIFICARE LE INFORMAZIONI TECNICHE RIPORTATE IN QUESTO CATALOGO.

POUR DES RAISONS TECHNIQUES D'IMPRESSION, LA REPRODUCTION DES COLORIS NE PEUT ÊTRE ABSOLUMENT EXACTE. CERAMICA MAGICA SE RÉSERVE LE DROIT DE MODIFIER LES RENSEIGNEMENTS TECHNIQUES INDIQUÉS DANS CE CATALOGUE.

AUS DRUCKTECHNISCHEN GRUENDEN SIND FARBABWEICHUNGEN GEGENUEBER DEN ORIGINALEN MOEGLICH. CERAMICA MAGICA HAT DAS RECHT, DIE IN DIESEM KATALOG AUFGEFUEHRTEN TECHNISCHEN ANGABEN ZU AENDERN.

POR MOTIVOS TIPOGRÁFICOS, LOS COLORES DIFIEREN LIGERAMENTE DE LOS AZULEJOS REALES. CERAMICA MAGICA SE RESERVA EL DERECHO DE MODIFICAR LA INFORMACIÓN TÉCNICA CITADA EN ESTE CATÁLOGO.

.....
brand of Terratinta Group Srl

Via monte Bianco 55, 41042 Fiorano Modenese (MO) - ITALY
www.cermagica.it info@cermagica.it



/magica1983



/ceramicamagica

Tel. +39 0536911408 Fax +39 05361940223



/ceramicamagica


Ceramics of Italy

MADE

IN

ITALY



Creating design. MADE IN ITALY

brand of Terratinta Group Srl

Via Monte Bianco 55, 41042 Fiorano Modenese (MO) - ITALY

Tel. +39 0536911408 Fax +39 05361940223

www.cermagica.it

info@cermagica.it

[/Magica1983](https://www.facebook.com/Magica1983)

[/ceramicamagica](https://www.instagram.com/ceramicamagica)

[/ceramicamagica](https://www.pinterest.com/ceramicamagica)